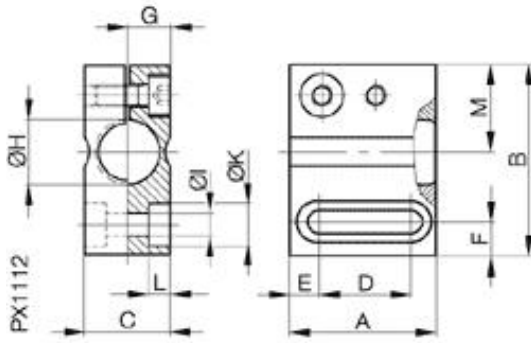


Accessories: Mounting unit BES 18.0-KB-4-F



Common Data

Version

Usable with

clamp

clamp with positive stop for
sensors M18mm

Mechanical Data

Measurements WxHxD or Dia x D

Material

Mounting

40x28x22

Aluminium

with 2 screws M4

Datasheet number::

Definitions see general catalog.

If not otherwise noted, ratings according to
IEC 60947-5-2 (DIN EN60947-5-2)

Balluff GmbH
Schurwaldstrasse 9
73765 Neuhausen a.d.F.
Phone (07158) 173-0 Fax (07158) 5010

Datenblatt by CD-ROM - 04/2007

BALLUFF
sensors worldwide